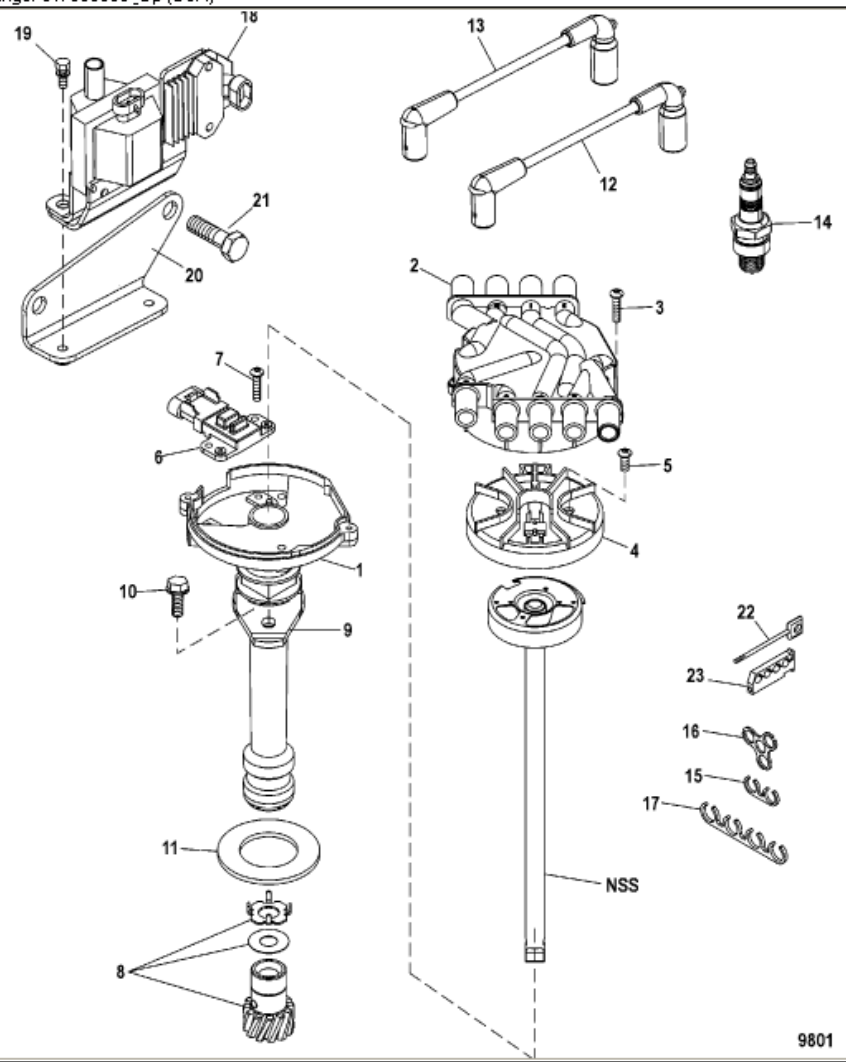


| Parts List | | | | | | |
|------------|-------|-----------|------------------------------------|-----|-------------|----------|
| Ref | Class | Part | Description | Qty | Comment | Footnote |
| 1 | | 884794A02 | DISTRIBUTOR ASSEMBLY | 1 | | |
| 2 | | 898253T22 | CAP, Distributor | 1 | | |
| 3 | 10 | 884786 | SCREW | 2 | | |
| 4 | | 898253013 | ROTOR | 1 | | |
| 5 | 10 | 884788 | SCREW | 2 | | |
| 6 | | 898141 | SENSOR, Hall Effect, Camshaft F | 1 | | |
| 7 | 10 | 884788 | SCREW | 2 | | |
| 8 | 43 | 884789 | GEAR ASSEMBLY | 1 | | |
| 9 | 54 | 88731 | CLAMP | 1 | | |
| 10 | 10 | 40011149 | SCREW, (M8 x 25) | 1 | | |
| 11 | 27 | 34486 3 | GASKET | 1 | | |
| 12 | 84 | 863656A 1 | CABLE KIT, Ignition (Spark Plugs a | 1 | | |
| 13 | 84 | 863657A 1 | CABLE, Coil Wire Assembly | 1 | | |
| 14 | 33 | 884019 | SPARK PLUG | 8 | (AC 41-932) | |
| 15 | | 54676 | RETAINER, Two Wire | 2 | | |
| 16 | | 32783 | RETAINER, Three Wire | 2 | | |
| 17 | | 32784 | RETAINER, Four Wire | 2 | | |
| 18 | 392 | 863704T | COIL, Ignition | 1 | | |
| 19 | 10 | 65746 1 | SCREW AND LOCKWASHER, (.25 | 2 | | |
| 20 | | 863663T | BRACKET, Coil | 1 | | |
| 21 | 10 | 98261 | SCREW, (.375-16 x .750) | 2 | | |
| 22 | 16 | 90096A 1 | STUD ASSEMBLY, (#10-32 x Spec | 2 | | |
| 23 | 54 | 72821 | RETAINER | 2 | | |



9801